

KT10 basic, Batch operation



	page
Generally safety warnings	2
Functional description and specifications	3
Operating speeds	3
Maintenance information	4
Dispersing element	5
Technical data	6
Warranty	6
Accessories	6



408, Ace High-end Tower 8 Cha, 84, Gasan Digital 1-Ro, Geumcheon-Gu, Seoul, 153-802, Korea

TEL : + 82 - 2 - 6264 - 5745 (rep.)

FAX : + 82 - 2 - 6264 - 5747 (rep.)

E-mail : korprotec@naver.com

kmixer@naver.com

Web : www.k-mixer.com / www.korpro.com

Generally Safety Warnings

Read all safety warnings and all instructions. Failure to follow the warnings and instructions may result in electric shock, fire and/or serious injury.

SAVE ALL WARNINGS AND INSTRUCTIONS FOR FUTURE REFERENCE

The term “drive” in the warnings refers to your mains-operated (corded) drive or battery-operated (cordless) drive.

- Work area safety

Keep work area clean and well lit. Cluttered or dark areas invite accidents.

Do not operate drive in explosive atmospheres, such as in the presence of flammable liquids, gases or dust. Drive create sparks which may ignite the dust or fumes.

Keep children and bystanders away while operating a drive. Distractions can cause you to lose control.

- Electrical safety

Drive plugs must match the outlet.

Never modify the plug in any way. Do not use any adapter plugs with earthed (grounded) drive. Unmodified plugs and matching outlets will reduce risk of electric shock.

Avoid body contact with earthed or grounded surfaces such as pipes, radiators, ranges and refrigerators. There is an increased risk of electric shock if your body is earthed or grounded.

Do not expose drive to rain or wet conditions. Water entering a drive will increase the risk of electric shock.

Do not abuse the cord. Never use the cord for carrying, pulling or unplugging the drive. Keep cord away from heat, oil, sharp edges or moving parts. Damaged or entangled cords increase the risk of electric shock.

When operating a drive outdoors, use an extension cord suitable for outdoor use.

Use of a cord suitable for outdoor use reduces the risk of electric shock.

If operating the drive in damp locations is unavoidable, use a Ground Fault Circuit Interrupter (GFCI) protected supply. Use of an GFCI reduces the risk of electric shock.

- Personal safety

Stay alert, watch what you are doing and use common sense when operating a

drive. Do not use a drive while you are tired or under the influence of drugs, alcohol or medication. A moment of inattention while operating drive may result in serious personal injury.

Use personal protective equipment. Always wear eye protection. Protective equipment such as dust mask, non-skid safety shoes, hard hat, or hearing protection used for appropriate conditions will reduce personal injuries.

Prevent unintentional starting. Ensure the switch is in the off-position before connecting to power source and / or battery pack, picking up or carrying the drive. Carrying drive with your finger on the switch or energizing drive that have the switch on invites accidents.

Remove any adjusting key or wrench before turning the drive on. A wrench or a key left attached to a rotating part of the drive may result in personal injury.

Do not overreach. Keep proper footing and balance at all times. This enables better control of the drive in unexpected situations. Dress properly. Do not wear loose clothing or jewelry. Keep your hair, clothing and gloves away from moving parts. Loose clothes, jewelry or long hair can be caught in moving parts.

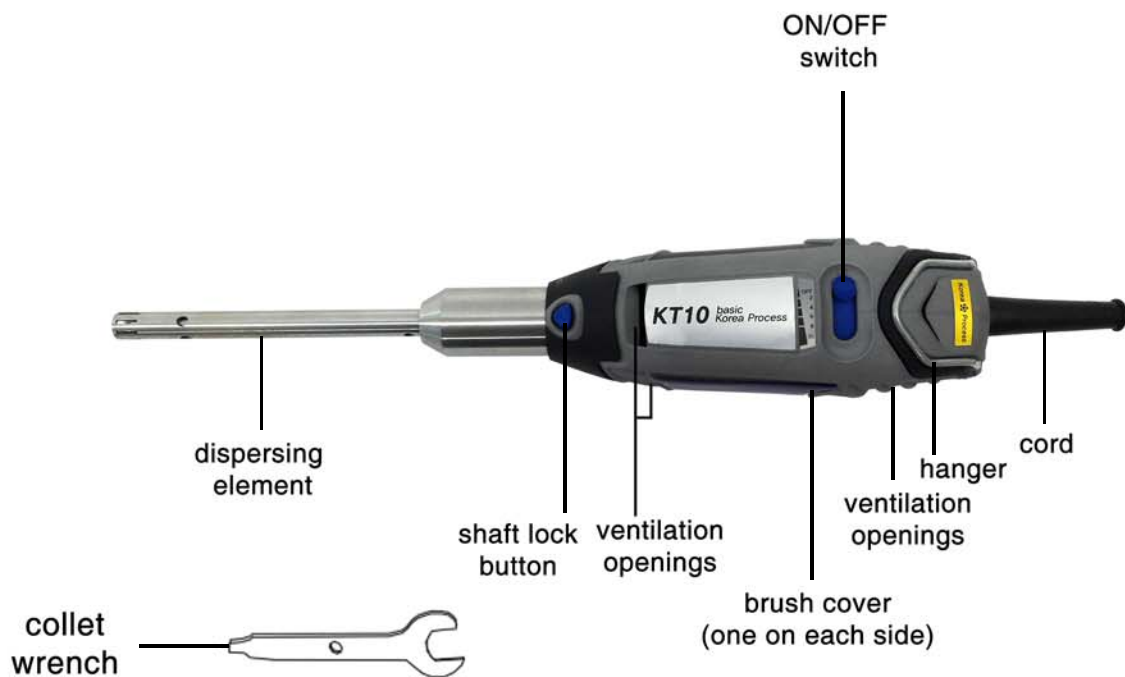
If devices are provided for the connection of dust extraction and collection facilities, ensure these are connected and properly used. Use of dust collection can reduce dust-related hazards.

- Drive use and care

Do not force the drive. Use the correct drive for your application. The correct drive will do the job better and safer at the rate for which it was designed.

Do not use the drive if the switch does not turn it on and off. Any drive that cannot be controlled with the switch is dangerous and must be repaired.

Functional Description and Specifications



Model	KT10 basic with dispersing element
Voltage rating	220V, 50/60Hz, 1-phase
Motor capacity	90W
Speed range	10,000~32,000/min

Operating Speeds

On the variable speed model, there are switch setting indicators marked with a line. Slide to the number on the housing to select the operating speed needed from 10,000 – 32,000 RPM.

Switch Setting	Speed Range
2	10,000 - 14,000 rpm
4	15,000 - 19,000 rpm
6	20,000 - 24,000 rpm
8	25,000 - 29,000 rpm
10	30,000 - 32,000 rpm



- Service

Preventive maintenance performed by unauthorized personnel may result in misplacing of internal wires and components which could cause serious hazard. We recommend that all tool service be performed by a Korea process.

To avoid injury from unexpected starting or electrical shock, always remove plug from wall outlet before performing service or cleaning.

- CARBON BRUSHES

The brushes and commutator in your tool have been engineered for many hours of dependable service.

In order to prepare your brushes for use, run your tool at full speed for 5 minutes under no load. This will properly "seat" your brushes, which extends the life of both your brushes and your tool.

To maintain peak efficiency of the motor, we recommend every 40 - 50 hours the brushes be examined. Only genuine Dremel replacement brushes specially designed for your tool should be used.

- MAINTENANCE OF REPLACEABLE BRUSHES ON MODELS KT10 basic

The brushes should be inspected frequently when tools are used continuously. If your tool runs sporadically, loses power, makes unusual noises or runs at a reduced speed, check the brushes.

- BEARINGS

Models KT10 basic have double ball bearing construction. Under normal use they will not require lubrication.

- Cleaning

To avoid accidents always disconnect the tool from the power supply before cleaning or performing any maintenance.

Ventilation openings and switch levers must be kept clean and free of foreign matter. Do not attempt to clean by inserting pointed objects through openings.

Certain cleaning agents and solvents damage plastic parts.

Some of these are: gasoline, carbon tetrachloride, chlorinated cleaning solvents, ammonia and household detergents that contain ammonia.

To continue using the tool in this condition will permanently damage your tool.

Follow these steps to check/change the rotary tool brushes:

1. With the power cord unplugged, place the tool on a clean surface. Use the tool wrench as a screwdriver to remove the brush caps in a counter-clockwise direction (Figure C).

2. Remove the brushes from the tool by pulling on the spring that is attached to the carbon brush. If the brush is less than 1/8" long and the end surface of the brush that contacts the commutator is rough and/or pitted, they should be replaced. Check both brushes (Figure D).

Usually the brushes will not wear out simultaneously. If one brush is worn out, replace both brushes. Make sure the brushes are installed as illustrated. The curved surface of the brush must match the curvature of the commutator.

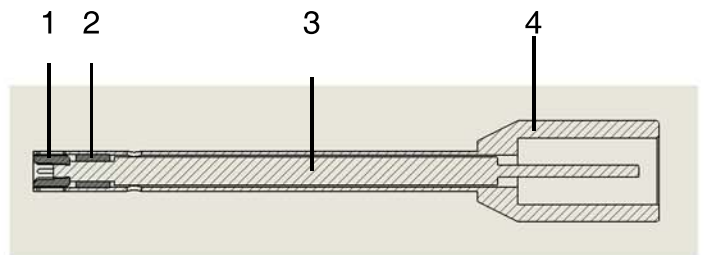
3. After replacing brushes the tool should be run at no-load; place it on a clean surface and run it freely at full speed for 5 minutes before loading (or using) the tool. This will allow the brushes to "seat" properly and will give you more hours of life from each set of brushes. This will also extend the total life of your tool since the commutator surface will "wear" longer.



Dispersing element

Dispersing element KT10-S-10G

- 1 rotor
- 2 PTFE - bearing bushing
- 3 shaft
- 4 shaft tube



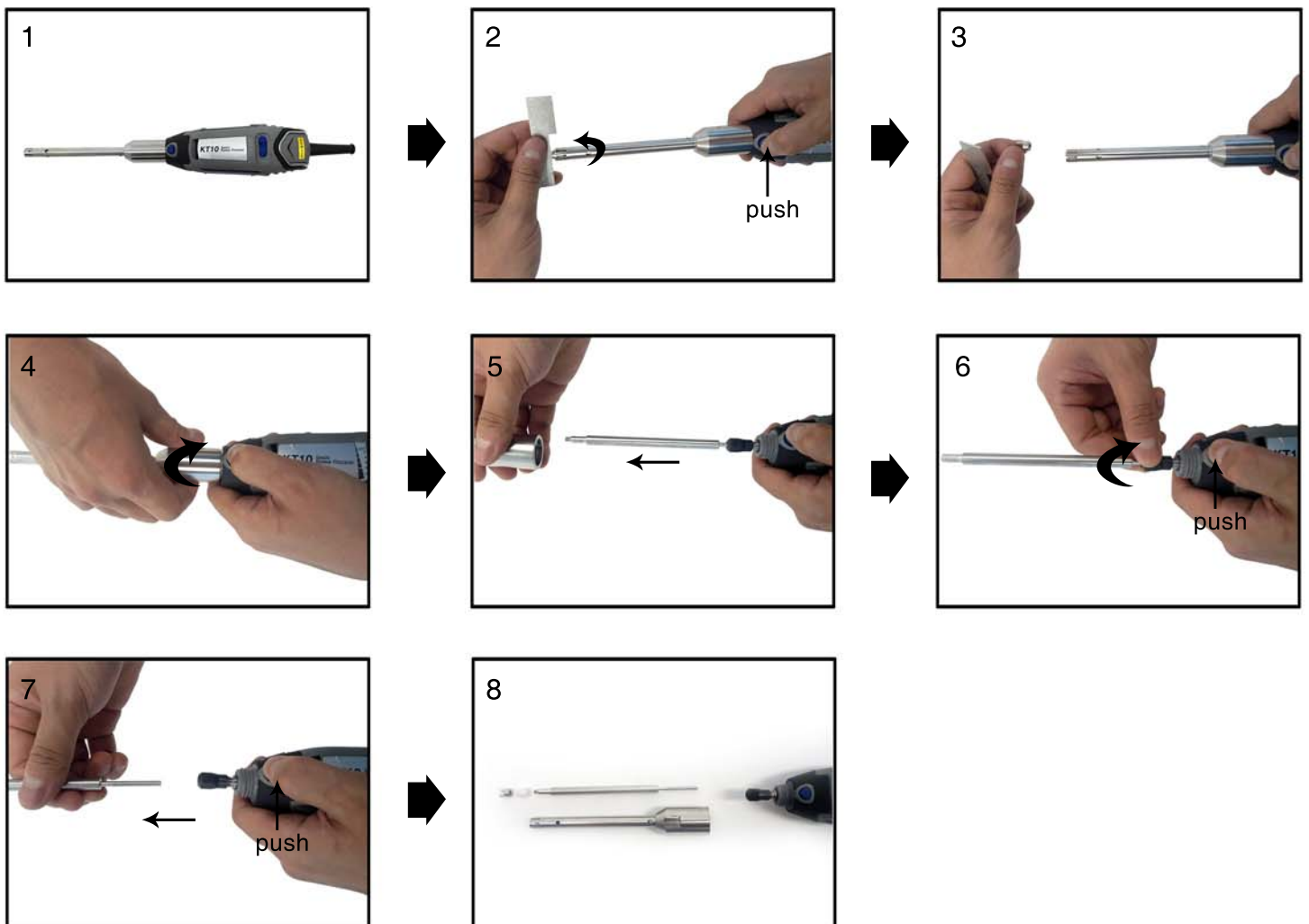
Exchangeable dispersing element

- KT10-S-05G
- KT10-S-08G
- KT10-S-10G
- KT10-S-10M
- KT10-S-10F

Materials contacting the product
(both dispersing elements)
Shaft, rotor and shaft: SUS 316 L
Bearing bushing: PTFE

Disassembling of dispersing element

- KT10 basic with dispersing element



Technical data

Model	KT10 basic drive
Motor capacity	90W
Speed range	10,000 ~ 32,000 rpm
Speed adjustment	Cont. variable
Sample volume (H ₂ O)	1 ~ 200 ml
Max viscosity	5,000 mPas
Noise without dispersing element	70 dB
Overload protection	Yes
Smooth run-on/start	Yes
Safety switch	Yes
Dimensions (W x D x H)	50 x 57 x 150 mm
Weight	0.8 kg
Electric source	220V, 60Hz(or 50Hz), 1-phase
Warranty	1 year

Accessories

- KPT Turn table stand-S	K510001
- KPT Turn table stand-T	K510002
- KPT Multi stand-mini	K510003
- KPT-10 Holding clamp	K520002
- KPT-10 Boss head	K530002

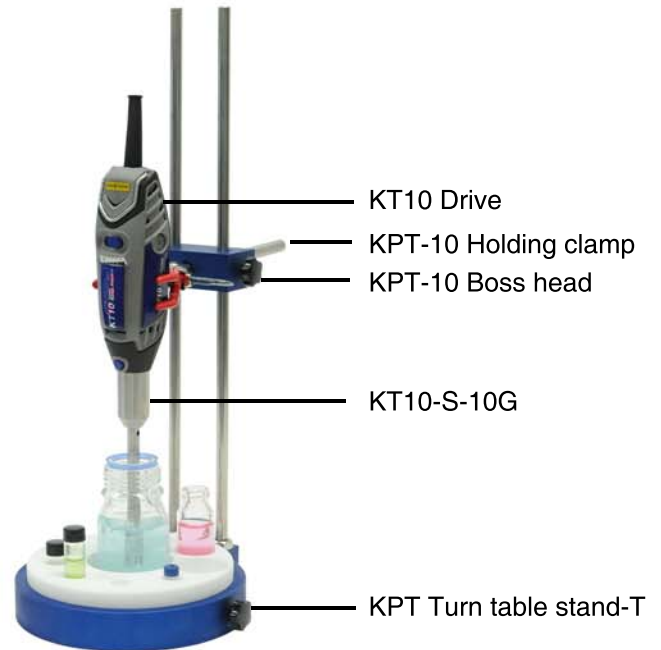
Exchangeable dispersing element

- KT10-S-05G	K110001
- KT10-S-08G	K110002
- KT10-S-10G	K110003
- KT10-S-10M	K110004
- KT10-S-10F	K110005

Warranty

In accordance with KOREA PROCESS warranty conditions, the warranty period is 12 months. For claims under the warranty please contact your local dealer. You may also send the machine direct to our works, enclosing the delivery invoice and giving reasons for the claim. You will be liable for freight costs.

The warranty does not cover wearing parts, nor does it apply to faults resulting from improper use or insufficient care and maintenance contrary to the instructions in this operating manual.



408, Ace High-end Tower 8 Cha, 84, Gasan Digital 1-Ro, Geumcheon-Gu, Seoul, 153-802, Korea

TEL : + 82 - 2 - 6264 - 5745 (rep.)

FAX : + 82 - 2 - 6264 - 5747 (rep.)

E-mail : korprotec@naver.com

kmixer@naver.com

Web : www.k-mixer.com / www.korpro.com